




**International
House**

Sydney City | Bondi
Darwin | Melbourne
Gold Coast | Byron Bay



Business
College at 



ACCOMMODATION

*We provide a range of supportive and comfortable accommodation options,
so you can focus on your learning and enjoy your time in Australia!*



**SYDNEY
CITY**



BONDI



\$ Accommodation Placement Fee: \$330
VIP: \$410

✈️ APU/ADO Service: \$190
Late arrival after 10pm + \$60
Unaccompanied Minor Service: \$430

📅 Payment is due at least 4 weeks prior to student arrival

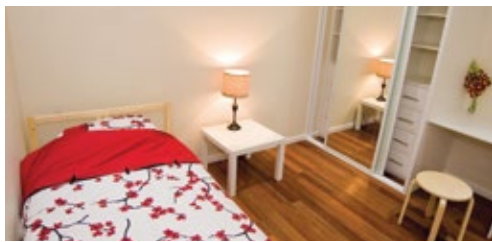
📊 Living cost in Australia per week:
- Groceries and meals: \$200
- Public Transport: \$60

HOMESTAY

Living with a friendly Australian family is the most popular option. On average, homestay families live about 40 to 60 minutes by public transport from the school. Homestay accommodation includes breakfast & dinner from Monday to Friday, plus lunch on weekends.

*VIP rooms include use of a private bathroom, subject to availability.

RESIDENTIAL 2Stay



Main features: Modern & fully-furnished, open-plan living area with TV, fully-equipped kitchen, shared bathrooms, Wi-Fi & utilities included, coin-operated laundry, bed linens included.

🏠 Type: Shared Apartments & Houses

📍 Location: Kingsford, Randwick, North Sydney

Weekly Rates 2022 / week

Standard Single	\$370/ VIP \$510*
Twin Share (students arriving together)	\$340
Standard Single with Guardianship	\$485 (single) \$435 (twin)
Internet must be requested at time of application	\$15
Extra Night per night	\$75/ VIP \$95

www.2stay.com.au

Weekly Rates 2022/week

Standard Single	\$365
Studio	\$470
Twin Share	\$255
Security Deposit (Bond) of \$350 to be paid on the day of arrival	

Terms & Conditions for all options: Prices are subject to provider changes and availability / Minimum length of stay: 4 weeks for residential accommodation and 2 weeks for homestay / Payment is due at least 4 weeks prior to student arrival / Placement confirmation sent after receipt of full payment and confirmation of arrival flight details / Cancellation fees apply and are subject to provider policies

 **Accommodation Placement Fee: \$330**
VIP: \$410

 **APU/ADO Service: \$190**
Late arrival after 10pm + \$60
Unaccompanied Minor Service: \$430

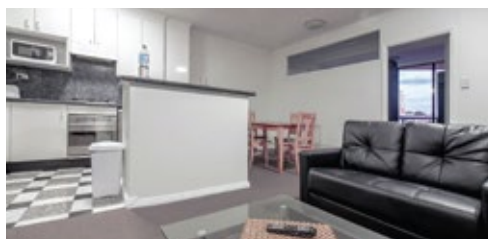
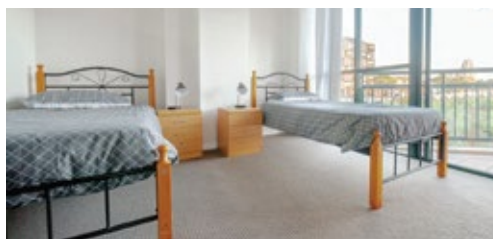
 **Payment is due at least 4 weeks prior to student arrival**

 **Living cost in Australia per week:**
- Groceries and meals: \$200
- Public Transport: \$60

RESIDENTIAL

Accommodation 4 Students (A4S)

www.a4s.com.au



Main features: Fully-furnished apartments in a modern residential complex, with fully-equipped kitchen and shared bathrooms. Laundry facilities (coin-operated machines). Wi-Fi included. Bed linens provided. Utility expenses included. Gym and pool in all Sydney City apartment buildings.

 **Type:** Shared Apartments

 **Location:** Sydney City (Pyrmont, Ultimo, Haymarket, CBD) or Suburbs (Artarmon, Rockdale, Kogarah, Lane Cove, Ashfield)

Weekly Rates 2022/ week

Sydney City - Twin Share \$275

Suburb - Standard Single \$275

Suburb - Twin Share \$275

Security Deposit (Bond) of \$350 to be paid on the day of arrival

Furnished Property Group (Jack's Place)

www.furnishedpropertygroup.com.au



Main features: Student residence with 40 single rooms, fully equipped kitchens, lounge areas with cable TV, separate male and female shared bathrooms, communal study room, roof-top terrace with outdoor furniture and BBQ. Internet in every room. On-site staff. Laundry facilities (coin operated machines). Bed linen provided.

 **Type:** Student Residence

 **Location:** Sydney City (Elizabeth Bay)

Weekly Rates 2022/ week

Standard Single \$295

Security Deposit (Bond) of \$350 to be paid on the day of arrival

Terms & Conditions for all options: Prices are subject to provider changes and availability / Minimum length of stay: 4 weeks for residential accommodation and 2 weeks for homestay / Payment is due at least 4 weeks prior to student arrival / Placement confirmation sent after receipt of full payment and confirmation of arrival flight details / Cancellation fees apply and are subject to provider policies

\$ Accommodation Placement Fee: \$330
VIP: \$410

✈️ APU/ADO Service: \$190
Late arrival after 10pm + \$60
Unaccompanied Minor Service: \$430

📅 Payment is due at least 4 weeks prior to student arrival

📊 Living cost in Australia per week:
- Groceries and meals: \$200
- Public Transport: \$60

RESIDENTIAL Campus Living Villages

www.campuslivingvillages.com



Main features: Fully-furnished apartments in a modern residential complex, with fully-equipped kitchen and shared bathrooms. Laundry facilities (coin/card operated machines). Wi-Fi included. Bed linens provided. Utility expenses included.



Type: Shared Apartments



Location: Student Village, University of New South Wales (UNSW)

Weekly Rates 2022/ week

Standard Single \$365

Key Fob Deposit of \$50 to be paid on arrival

Security Deposit (Bond) of \$300 to be paid on the day of arrival



Terms & Conditions for all options: Prices are subject to provider changes and availability / Minimum length of stay: 4 weeks for residential accommodation and 2 weeks for homestay / Payment is due at least 4 weeks prior to student arrival / Placement confirmation sent after receipt of full payment and confirmation of arrival flight details / Cancellation fees apply and are subject to provider policies



MELBOURNE



\$ Accommodation Placement Fee: \$330
VIP: \$410

✈️ APU/ADO Service: \$190
Late arrival after 10pm + \$60
Unaccompanied Minor Service: \$430

📅 Payment is due at least 4 weeks prior to student arrival

📊 Living cost in Australia per week:
- Groceries and meals: \$200
- Public Transport: \$60

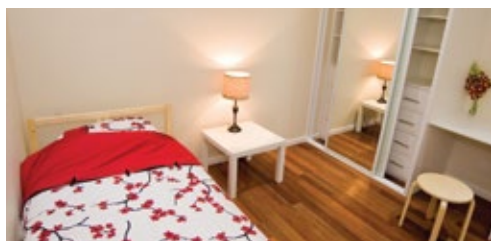
HOMESTAY

Living with a friendly Australian family is the most popular option. On average, homestay families live 40 to 60 minutes (by public transport) from the school. Homestay accommodation includes breakfast & dinner from Monday to Friday, plus lunch on weekends. VIP rooms include a private bathroom.

*VIP rooms include use of a private bathroom, subject to availability.

RESIDENTIAL

2Stay



Main features: Modern & fully-furnished houses and apartments with open-plan living area equipped with TV and fully-equipped kitchen as well as shared bathrooms. Laundry facilities (coin operated machines). Wi-Fi and utilities included. Bed linens included.

🏠 Type: Shared Apartments and Houses

📍 Locations: Southbank, CBD, Abbotsford, Docklands, South Melbourne; Brunswick East, West Melbourne, South Melbourne

Weekly Rates 2022/ week

Standard Single	\$370/ VIP \$510*
Twin Share (students arriving together)	\$340
Standard Single with Guardianship	\$485 (single) \$435 (twin)
Internet must be requested at time of application	\$15
Extra Night per night	\$75/ VIP \$95

www.2stay.com.au

Weekly Rates 2022/week


Standard Single	\$365
Twin Share	\$255

Security Deposit (Bond) of \$350 to be paid on the day of arrival

Terms & Conditions for all options: Prices are subject to provider changes and availability / Minimum length of stay: 4 weeks for residential accommodation and 2 weeks for homestay / Payment is due at least 4 weeks prior to student arrival / Placement confirmation sent after receipt of full payment and confirmation of arrival flight details / Cancellation fees apply and are subject to provider policies

 **Accommodation Placement Fee: \$330**
VIP: \$410

 **APU/ADO Service: \$190**
Late arrival after 10pm + \$60
Unaccompanied Minor Service: \$430

 **Payment is due at least 4 weeks prior to student arrival**

 **Living cost in Australia per week:**
- Groceries and meals: \$200
- Public Transport: \$60

RESIDENTIAL

Campus Living Villages

www.campuslivingvillages.com



Main features: Fully furnished apartments in a modern residential complex, with communal kitchen, dining and living areas. Large indoor and outdoor social areas & social events. On-site staff and security. Key fob room access. Shared bathrooms. Laundry facilities (coin/card operated machine). Free Wi-Fi. Bed linens included. Utility expenses included.



Type: Shared Apartments



Location: Student Village, The University of Melbourne

Weekly Rates 2022/ week

Standard Single \$395

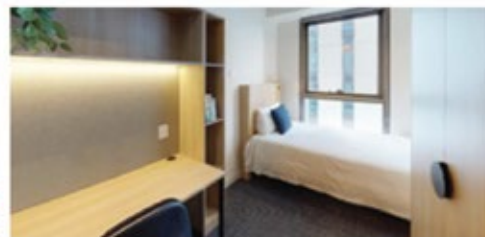
Studio \$500

Security Deposit (Bond) of \$300 & Key Fob Deposit of \$50 to be paid on the day of arrival.

RESIDENTIAL

UniLodge Melbourne City

www.unilodge.com.au



Main features: Purpose-built student accommodation located in Melbourne CBD. Modern share apartments with unlimited WiFi, 24/7 security, air conditioning, communal kitchen and lounge areas. Rooms include fridge, microwave and storage. Large student lounge area available with pool tables, TVs, lounges and social activities. Utilities included, coin-operated laundry onsite. Bed linen and kitchen equipment at additional cost.



Type: Student Residence



Location: 480 Elizabeth St, Melbourne

Weekly Rates 2022/ week

Standard Single from \$415

Studio from \$515

Security Deposit (Bond) of 4 weeks rent and \$200 cleaning fee to be paid prior to booking.

Terms & Conditions for all options: Prices are subject to provider changes and availability / Minimum length of stay: 4 weeks for residential accommodation and 2 weeks for homestay / Payment is due at least 4 weeks prior to student arrival / Placement confirmation sent after receipt of full payment and confirmation of arrival flight details / Cancellation fees apply and are subject to provider policies

 **Accommodation Placement Fee: \$330**
VIP: \$410

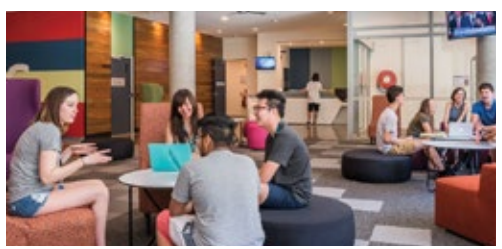
 **APU/ADO Service: \$190**
Late arrival after 10pm + \$60
Unaccompanied Minor Service: \$430

 **Payment is due at least 4 weeks prior to student arrival**

 **Living cost in Australia per week:**
- Groceries and meals: \$200
- Public Transport: \$60

RESIDENTIAL Campus Living Villages

www.campuslivingvillages.com



Main features: Fully furnished apartments in a modern residential complex, with communal kitchen, dining and living areas. Large indoor and outdoor social areas & social events. On-site staff and security. Key fob room access. Shared bathrooms. Laundry facilities (coin/card operated machine). Free Wi-Fi. Bed linens included. Utility expenses included.

 **Type:** Shared Apartments
 **Location:** Student Village, The University of Melbourne

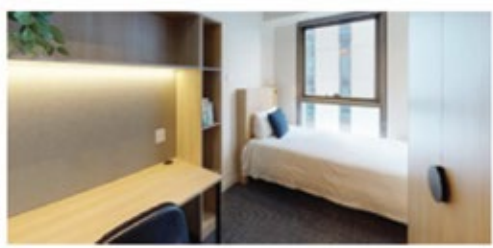
Weekly Rates 2022/ week

Standard Single	\$395
Studio	\$500



Security Deposit (Bond) of \$300 & Key Fob Deposit of \$50 to be paid on the day of arrival.

RESIDENTIAL UniLodge Melbourne City

www.unilodge.com.au



Main features: Purpose-built student accommodation located in Melbourne CBD. Modern share apartments with unlimited WiFi, 24/7 security, air conditioning, communal kitchen and lounge areas. Rooms include fridge, microwave and storage. Large student lounge area available with pool tables, TVs, lounges and social activities. Utilities included, coin-operated laundry onsite. Bed linen and kitchen equipment at additional cost.

 **Type:** Student Residence
 **Location:** 480 Elizabeth St, Melbourne

Weekly Rates 2022/ week

Standard Single	from \$415
Studio	from \$515

Security Deposit (Bond) of 4 weeks rent and \$200 cleaning fee to be paid prior to booking.

Terms & Conditions for all options: Prices are subject to provider changes and availability / Minimum length of stay: 4 weeks for residential accommodation and 2 weeks for homestay / Payment is due at least 4 weeks prior to student arrival / Placement confirmation sent after receipt of full payment and confirmation of arrival flight details / Cancellation fees apply and are subject to provider policies



**GOLD
COAST**



\$ Accommodation Placement Fee: \$330
VIP: \$410

✈️ APU/ADO Service: \$190
Late arrival after 10pm + \$60
Unaccompanied Minor Service: \$430

📅 Payment is due at least 4 weeks prior to student arrival

📊 Living cost in Australia per week:
- Groceries and meals: \$200
- Public Transport: \$60

HOMESTAY

Living with a friendly Australian family is the most popular option. On average, homestay families live 30 to 50 minutes (by public transport) from the school. Homestay accommodation includes breakfast & dinner from Monday to Friday, plus lunch on weekends. Wi-Fi internet is included.

*VIP rooms include use of a private bathroom, subject to availability.

Weekly Rates 2022/ week

Single	\$370/VIP \$510*
Twin Share (students arriving together)	\$340
Single with guardianship	\$485 (single) \$435 (twin)
Extra Night	\$75/VIP \$95

RESIDENTIAL

2Stay

www.2stay.com.au



Main features: Modern & fully-furnished, open-plan living area with TV & fully-equipped kitchen, shared bathrooms, Wi-Fi & utilities included, coin/card operated laundry, bed linens included.

🏠 Type: Shared Apartments and Houses

📍 Locations: Southport, Surfer's Paradise

Weekly Rates 2021/week

Standard Single	\$365
Twin Share	\$255
Extra Night \$65 per night	
Security Deposit (Bond) of \$350 to be paid on the day of arrival	

Terms & Conditions for all options: Prices are subject to provider changes and availability / Minimum length of stay: 4 weeks for residential accommodation and 2 weeks for homestay / Payment is due at least 4 weeks prior to student arrival / Placement confirmation sent after receipt of full payment and confirmation of arrival flight details / Cancellation fees apply and are subject to provider policies

\$ Accommodation Placement Fee: \$330
VIP: \$410

✈️ APU/ADO Service: \$190
Late arrival after 10pm + \$60
Unaccompanied Minor Service: \$430

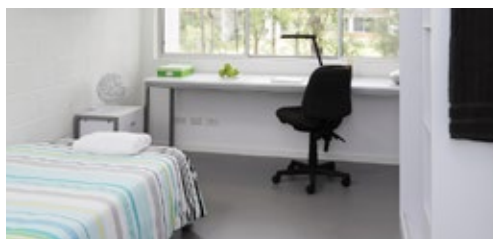
📅 Payment is due at least 4 weeks prior to student arrival

📊 Living cost in Australia per week:
- Groceries and meals: \$200
- Public Transport: \$60

RESIDENTIAL

Campus Living Villages

www.campuslivingvillages.com



Main features: Modern & fully-furnished, communal kitchen, dining and living areas, shared bathrooms, Wi-Fi & utilities included, coin-operated laundry, bed linens included, on-site staff & security, key fob room access, large indoor & outdoor social areas & social events.

🏠 **Type:** Shared Apartments

📍 **Location:** Griffith University Village, Southport

Weekly Rates 2022/ week

Standard Single \$315

Key fob deposit of \$50 to be paid on arrival

Security Deposit (Bond) of \$300 to be paid on the day of arrival



Terms & Conditions for all options: Prices are subject to provider changes and availability / Minimum length of stay: 4 weeks for residential accommodation and 2 weeks for homestay / Payment is due at least 4 weeks prior to student arrival / Placement confirmation sent after receipt of full payment and confirmation of arrival flight details / Cancellation fees apply and are subject to provider policies



DARWIN



\$ Accommodation Placement Fee: \$330
VIP: \$410

✈️ APU/ADO Service: \$190
Late arrival after 10pm + \$60
Unaccompanied Minor Service: \$430

📅 Payment is due at least 4 weeks prior to student arrival

📊 Living cost in Australia per week:
- Groceries and meals: \$200
- Public Transport: \$60

HOMESTAY

Living with a friendly Australian family is the most popular option. On average, homestay families live about 40 to 60 minutes by public transport from the school. Homestay accommodation includes breakfast & dinner from Monday to Friday, plus lunch on weekends.

RESIDENTIAL UniLodge Darwin

Room type 2022/week

Standard Single	\$400
Twin Share (students arriving together)	\$345
Standard Single with Guardianship	\$550
Internet must be requested at time of application	\$15
Extra Night	\$80 per night

www.unilodge.com.au



Main features: Purpose-built accommodation located close to shops and public transport. Modern share apartments with WiFi, 24/7 security, air conditioning, communal kitchen and lounge. Rooms include fridge, microwave and storage. Student area with pool tables, TVs and social activities. Utilities included, coin-operated laundry onsite. Bed linen and kitchen items at additional cost.

🏠 Type: Student Residence

📍 Locations: 6 Dripstone Road, Casuarina

Weekly Rates 2022/week

Standard Single from \$250

- Long stay of 24 weeks+ only
- Security Deposit (Bond) of 4 weeks rent and \$200 cleaning fee to be paid prior to booking

Terms & Conditions for all options: Prices are subject to provider changes and availability / Minimum length of stay: 4 weeks for residential accommodation and 2 weeks for homestay / Payment is due at least 4 weeks prior to student arrival / Placement confirmation sent after receipt of full payment and confirmation of arrival flight details / Cancellation fees apply and are subject to provider policies



**BYRON
BAY**



\$ Accommodation Placement Fee: \$330
VIP: \$410

✈️ APU/ADO Services
Brisbane: \$380
Late arrival after (10pm-5am) + \$100
Gold Coast: \$200
Late arrival after (10pm-5pm) + \$30

📅 Payment is due at least 4 weeks prior to student arrival

📊 Living cost in Australia per week:
- Groceries and meals: \$200
- Public Transport: \$60

HOMESTAY

Living with a friendly Australian family is the most popular option. On average, homestay families live 25 minutes by bike or up to 50 minutes by bus from school. Homestay accommodation includes breakfast & dinner from Monday to Friday, plus lunch on weekends. Wi-Fi internet is included at most homes.

*VIP rooms include use of a private bathroom, subject to availability.

Weekly Rates 2022/week

Standard Single	\$370/VIP \$510*
Twin Share (students arriving together)	\$340
Standard Single with guardianship	\$485
Extra Night	\$75/VIP \$95

RESIDENTIAL

Life in Byron

www.lifeinbyron.com.au



Main features: Purpose built student residence with 32 single, twin share and triple share rooms, fully equipped communal kitchen and common room, TV, table tennis, lounges, free Wi-Fi in common spaces & bedrooms and coin-operated laundry. Bed linen included.

🏠 Type: Student Residence

📍 Location: 58 Tennyson Street, Byron Bay

🚶 10 minutes to IH Byron Bay

Weekly Rates 2022/week

Standard Single	\$330
Twin Share	\$260
Double Room	\$440

Bond of 2 weeks rent value to be paid on arrival

Terms & Conditions for all options: Prices are subject to provider changes and availability / Minimum length of stay: 4 weeks for residential accommodation and 2 weeks for homestay / Payment is due at least 4 weeks prior to student arrival / Placement confirmation sent after receipt of full payment and confirmation of arrival flight details / Cancellation fees apply and are subject to provider policies. Rooms are subject to availability, seasonal room rates apply.



RESIDENTIAL

The Surf House

www.thesurfhouse.com.au



Main features: Located 50 metres from the beach, this relaxed 'surf inspired' accommodation combines convenience with modern comforts, including in room air-conditioning, free high speed WiFi, onsite laundry, communal kitchen, work spaces, 24/7 reception & flexible check in, luggage storage, pool table, complimentary surfboard hire and a rooftop café bar. Private and shared rooms, including female-only rooms available. Linen provided.



Type: Guest House



Location: 23 Lawson Street, Byron Bay



8 minutes to IH Byron Bay

Weekly Rates 2022

	Summer	Autumn/Winter	Spring	LONG TERM	PEAK EVENTS
RESIDENTIAL The Surf House	1 Jan 2022 31 Mar 2022	1 Apr 2022 31 Aug 2022	1 Sep 2022 23 Dec 2022	3 week minimum 1 May - 31 Aug 2022	Peak period - Special event dates
Dorm Room (4 or 6 beds)	from \$335	from \$240	from \$290	from \$200	from \$500
Twin Room (per room)	\$1000	\$725	\$890	\$545	\$1400
Double Room	\$1000	\$725	\$890	\$545	\$1400
Queen Ensuite	\$1400	\$950	\$1230	\$700	\$1680

Terms & Conditions for all options: Prices are subject to provider changes and availability / Minimum length of stay: 4 weeks for residential accommodation and 2 weeks for homestay / Payment is due at least 4 weeks prior to student arrival / Placement confirmation sent after receipt of full payment and confirmation of arrival flight details / Cancellation fees apply and are subject to provider policies. Rooms are subject to availability, seasonal room rates apply.



RESIDENTIAL

Wake Up!

www.wakeup.com.au



Main features: Located next to the beach, this relaxed 'bohemian inspired' accommodation combines a relaxed atmosphere with modern comforts, including air-conditioning in every room, free high speed WiFi, onsite laundry, communal kitchen, outdoor courtyard, onsite beach-style café bar, complimentary surfboard hire and free activities such as yoga and fitness classes for guests. Private and shared rooms, female-only rooms available. Linen provided.



Type: Guest House



Location: 25 Childe Street, Byron Bay



10 minutes to IH Byron Bay

Weekly Rates 2022

	Summer	Autumn/Winter	Spring	LONG TERM	PEAK EVENTS
RESIDENTIAL Wake Up!	1 Jan 2022 31 Mar 2022	1 Apr 2022 31 Aug 2022	1 Sep 2022 23 Dec 2022	3 week minimum 1 May - 31 Aug 2022	Peak period - Special event dates
Dorm Room (4 or 6 beds)	from \$290	from \$225	from \$260	from \$185	from \$440
Twin Room (per room)	\$950	\$725	\$780	\$545	\$1115
Double Room	\$950	\$725	\$780	\$545	\$1115
Queen Ensuite	\$1115	\$950	\$1115	\$700	\$1680

Terms & Conditions for all options: Prices are subject to provider changes and availability / Minimum length of stay: 4 weeks for residential accommodation and 2 weeks for homestay / Payment is due at least 4 weeks prior to student arrival / Placement confirmation sent after receipt of full payment and confirmation of arrival flight details / Cancellation fees apply and are subject to provider policies. Rooms are subject to availability, seasonal room rates apply.



International House

Sydney City | Bondi
Darwin | Melbourne
Gold Coast | Byron Bay



Business College at ih



Health and well-being tips to stay COVID safe.

Please follow the government and accommodation provider's current guidelines at any time by keeping up to date.



#livetheIHdream

| (+61 2) 9279 0733

@ | info@ihsydney.com.au

| www.ihsydney.com.au / www.ihbc.edu.au



Follow us: @ihsydney @ihbcnow

IH Sydney Training Services Pty Ltd
CRICOS Provider 02623G
RTO Number 91109

IH Sydney City

Level 1, 203 Clarence Street, Sydney, NSW 2000

IH Sydney Bondi

Floor 1, 237 Oxford Street, Bondi Junction, NSW 2022

IH Darwin

3 Searcy Street, Darwin, NT 0800 and
Level 1 and 2, 69 Smith Street, Darwin, NT 0800

IH Melbourne

Level 6, 350 Queen Street, Melbourne, VIC 3000

IH Gold Coast

Level 4, 42 Marine Parade, Southport, QLD 4215

IH Byron Bay

1 Carlyle Street, Byron Bay, NSW 2481