



\$ Accommodation Placement Fee: \$300

✈ Airport Pick Up Service: \$170

📅 Payment is due at least 4 weeks prior to student arrival

Cost of Living in Australia/week:
 - Groceries and meals: \$200
 - Public Transport: \$60

HOMESTAY

Living with a friendly Australian family is the most popular option. On average, homestay families live about 40 to 60 minutes by public transport from the school. Homestay accommodation includes breakfast & dinner from Monday to Friday, plus lunch on weekends.

Room type 2020 / week

Standard Single	\$335/ VIP \$460
Twin Share <small>(Students arriving together)</small>	\$305
Standard Single <small>with Guardianship</small>	\$440 (single) \$395 (twin)
Internet <small>Must be requested at time of application</small>	\$15
Extra Night	\$65/ \$85 per night

RESIDENTIAL

CozyStay/ Student Residence Premium

www.cozystay.com.au



Main features: High end, fully furnished houses and apartments with planned kitchen, timber floors and built in wardrobes. Laundry facilities (coin operated machines). Free high speed WiFi. Bed linen provided. Utility expenses included.

🏠 Type: Shared Apartments and Houses

✈ Extras: Compulsory Airport Transfer (\$170)


📍 Location: Eastern Suburbs (Kingsford / Randwick) and Lower North Shore (North Sydney)

Weekly Rates 2020 / week

Standard Single	\$405
Twin Share/ Double Room	\$245

Security Deposit (Bond) of \$350 to be paid on the day of arrival

Terms & Conditions for all options: Prices are subject to provider changes / Minimum length of stay: 4 weeks for residential accommodation and 2 weeks for homestay / Payment is due at least 4 weeks prior to student arrival / Placement confirmation sent after receipt of full payment and confirmation of arrival flight details / Cancellation fees apply and are subject to provider policies

 Accommodation Placement Fee: \$300

 Airport Pick Up Service: \$170

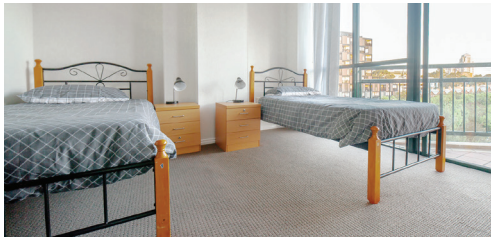
 Payment is due at least 4 weeks prior to student arrival

Cost of Living in Australia/week:
- Groceries and meals: \$200
- Public Transport: \$60

RESIDENTIAL

Accommodation 4 Students (A4S)

www.a4s.com.au



Main features: Fully furnished apartments in a modern residential complex, with swimming pool and gym for the Sydney City locations. Laundry facilities. Free high speed WiFi. Bed linen provided. Utility expenses included.



Type: Shared Apartments



Location: Sydney City (Pyrmont, Ultimo, CBD) or Suburbs (Artarmon, Rockdale, Kogarah, Lane Cove, Ashfield)

Weekly Rates 2020/ week

Sydney City - Twin Share \$270

Suburb - Standard Single \$270

Suburb - Twin Share \$215

Security Deposit (Bond) of \$350 to be paid on the day of arrival

Jack's Place

www.furnishedproperty.com.au



Main features: Student residence with 40 single rooms, fully equipped kitchens, lounge areas with cable TV, separate male and female shared bathrooms, communal study room, roof-top terrace with outdoor furniture and BBQ. Free cable internet in every room. Free WiFi in common areas. Laundry facilities (coin operated machines). Bed linen provided.



Type: Student Residence



Location: Sydney City (Elizabeth Bay)

Weekly Rates 2020/ week

Standard Single \$380

Security Deposit (Bond) of \$350 to be paid on the day of arrival

Terms & Conditions for all options: Prices are subject to provider changes / Minimum length of stay: 4 weeks for residential accommodation and 2 weeks for homestay / Payment is due at least 4 weeks prior to student arrival / Placement confirmation sent after receipt of full payment and confirmation of arrival flight details / Cancellation fees apply and are subject to provider policies