


 Accommodation Placement Fee for all options: \$290



Airport Pick Up Service: \$170

 Payment is due at least 2 weeks prior to student arrival

 Cost of Living in Australia per week:
- Groceries and meals: \$200
- Public Transport: \$60

HOMESTAY

Living with a friendly Australian family is the most popular option. On average, homestay families live about 40 to 60 minutes by public transport from the school. Homestay accommodation includes breakfast & dinner from Monday to Friday, plus lunch on weekends.

Room type 2019

| |  |
|---|---|
| Standard Single: | \$335/week |
| Twin Share: (students arriving together) | \$300/week |
| Extra Night / Standard Single: | \$60/night |



RESIDENTIAL Village City / OziHouse



Main features:

Premier accommodation within walking distance of Melbourne's CBD. Conveniently positioned among some of the most well-known attractions, gardens and nightlife, Queen Victoria Market only a 5 min walk away. The free city tram zone is just around the corner from the accommodation. Laundry facilities (coin operated machines). Bed linen provided.



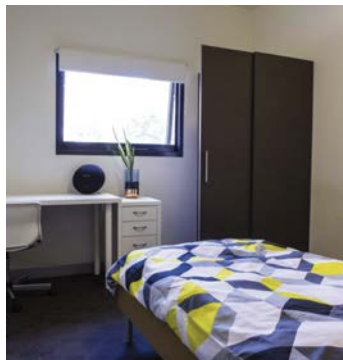
Type: Student Residence




Location: North Melbourne

Weekly rates 2019


| |  |
|--------------------------------|---|
| Standard Single: | \$400/week |
| Twin Share: | \$280/week |
| Extra Night / Standard Single: | \$60/night |



Terms & Conditions for all options: Prices are subject to provider changes / Minimum length of stay: 4 weeks for residential accommodation and 2 weeks for homestay / Payment is due at least 2 weeks prior to student arrival / Placement confirmation sent after receipt of full payment and confirmation of arrival flight details / Cancellation fees apply and are subject to provider policies

 Accommodation Placement Fee for all options: \$290


 Airport Pick Up Service: \$170

 Payment is due at least 2 weeks prior to student arrival

 Cost of Living in Australia per week:
- Groceries and meals: \$200
- Public Transport: \$6v0


RESIDENTIAL CozyStay

www.cozzystay.com.au

 **Main features:** High end, fully furnished houses and apartments with planned kitchen, timber floors and built in wardrobes. Laundry facilities (coin operated machines). Free high speed WiFi. Bed linen provided. Utility expenses included.

 **Type:** Shared Apartments and Houses

 **Extras:** Compulsory Airport Transfer (\$170)

 **Locations:** Melbourne CBD, North Melbourne, Southbank, Docklands.

Weekly rates 2019



Standard Single: \$400/week

Twin Share or Double Room: \$280/week

Security deposit (bond): \$350 to be paid on the day of arrival.

